



LIGHT STEEL **BUILDING SOLUTIONS**



Fernbrook Homes
High Park Village

Multi-Family Infill is building homes on unused and underutilized lands within existing urban areas.

NEW CONSTRUCTION | EXPANSIONS | RENOVATIONS

WALLSOLUTIONS



Aykler
Manors of Earl Street

Infill development keeps resources where people already live and allows rebuilding to occur.

ENGINEERED | QUALITY CONTROLLED | DURABLE

FLOOR SOLUTIONS



Urbancorp
100 Strachan Avenue

Infill development is the key to accommodating growth and redesigning our cities to be environmentally and socially sustainable.

COMPETITIVE | SUSTAINABLE | MAINTENANCE FREE

ROOF SOLUTIONS

AFFORDABLE LIGHT **STEEL SOLUTIONS**

BUILDING BETTER, STRONGER, FASTER





Urbancorp
King West Village



Hyde Park
Zenil



Aspen Ridge Homes
Markham Gardens



Urbancorp
1029 King Street

THE BENEFITS OF LIGHT STEEL STRUCTURAL FRAMING

BETTER

SUPERIOR FIRE PROTECTION
HIGHER QUALITY
HEALTHIER LIVING
DIMENSIONALLY STABLE
QUALITY ASSURED

Light Steel is Non-Combustible
Precisely Manufactured | Sustainable Engineered Material
Non-Toxic | Allergy Free | No Waste | 100% Recyclable
No Shrinking | No Warping | No Cracks
Engineered | Controlled Workmanship | Certified by P.Eng

STRONGER

WITHSTANDS THE ELEMENTS
ELIMINATE INSECT DAMAGE
CORROSION RESISTANT

Withstands Harsh Climatic Conditions | Superior Seismic Performance
Termite & Carpenter Ant Proof
Manufactured with a 100 Year Galvanized Coating

FASTER

PRE-ASSEMBLED
LESS DELAYS
SITE ACCESSIBILITY
INTEGRATED SERVICE

Enables Rapid Construction | Reduces Risk of Errors
Site Delays Do Not Impact In-Plant Production
Increases Site Mobility | Provides for a Safer Job Site
Engineered | Manufactured | Delivered | Installed | Certified

COST EFFECTIVE

COMPETITIVE
LESS MAINTENANCE
ON-TIME DELIVERY
THEFT & VANDALISM
CONSTRUCTION DEBRIS
PROJECT PLANNING

Cost Competitive with Wood Framing, Heavy Steel & Concrete
Reduce Call Back Costs | Reduce Maintenance Costs
Sequenced Deliveries | Reduce Delays Due to Weather
Reduce Material Theft & Risk of Construction Fires
Reduce Clean-Up Costs | Reduce Removal Costs
Reduces On-Site Co-ordination Problems and Disputes

TECHNICAL INFORMATION

DIMENSIONALLY SIMILAR TO LUMBER

Steel stud and joist framing members are dimensionally similar to lumber. For example; a 2" x 4" wood stud, which is actually 38mm x 90mm, is comparable to a 41mm x 92mm steel stud.

DURABILITY OF LIGHT STEEL

Light steel framing members are galvanized and will not rust. Recent studies indicate that the life span of the galvanized coating alone exceeds 100 years and the actual life span of the structure is much longer.

FIRE PERFORMANCE

Light steel wall and floor assemblies meet the requirements of NBC/OBC, Part 3 and Part 9.

For example, two fire rated wall assemblies available are;

ULC W424 (1 Hr. F.R.R. single demising wall)

ULC W445 (1.5 Hr. F.R.R. double demising wall)

Seven NRC tested floor assemblies also available.

SOUND TRANSMISSION

Light steel wall and floor assemblies meet the requirements of NBC/OBC, and have STC ratings that exceed 60.

THERMAL PERFORMANCE

Our insulated wall and floor assemblies meet the requirements of NBC/OBC when completed to our specifications. Rigid (extruded polystyrene) insulation is applied to the cold side of exterior framed components - providing a thermal break and dew point away from the structural members.

FINISHING THE BUILDING

Light steel framed structures allow for application of all modern wall & floor finishes without additional steps or special materials.

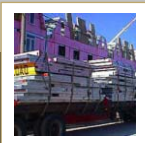
STRUCTURAL ISSUES

Capacities of light steel framing members are calculated in accordance with CAN/CSA S-136 and S16.1. There is a wide range of steel thicknesses available that exceed the capacities of comparable wood members. Lateral stability is achieved with a variety of shear wall options and floor diaphragm types.

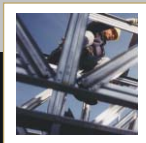
MECHANICAL SERVICES

Light steel framing members are pre-punched with holes at pre-determined intervals. These holes are suitable for plumbing and wiring. Larger penetrations may be cut to accommodate duct-work or drain pipes using the same rules that apply to wood framing.

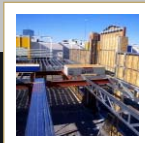
THE LEADING LIGHT STEEL FRAMING SERVICE PROVIDER IN THE INDUSTRY



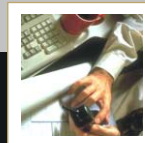
PANELIZATION



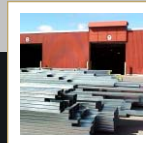
ROOF TRUSSES



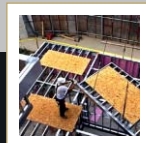
FLOOR JOISTS



LSF ENGINEERING



PRE-CUT STEEL



ON-SITE INSTALLATION